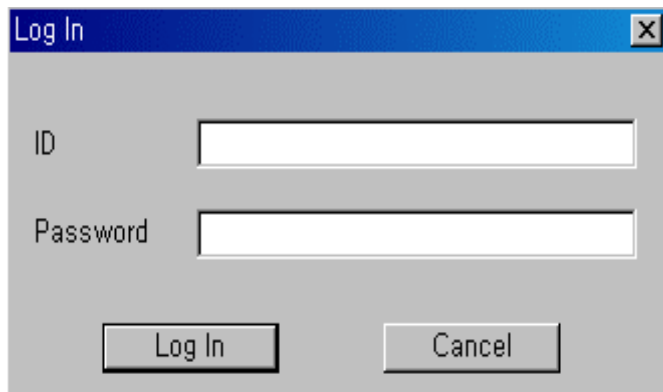
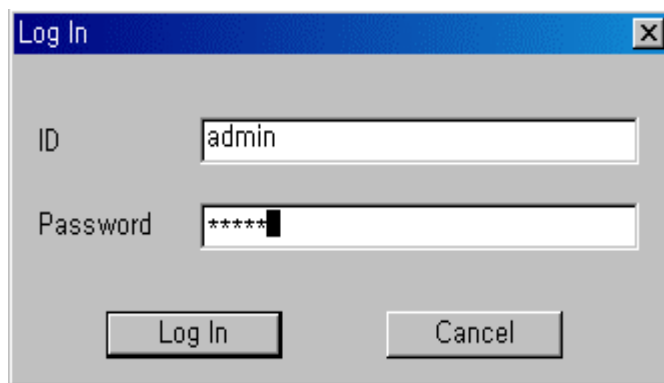


CHAP. 1 How to log in CMS program

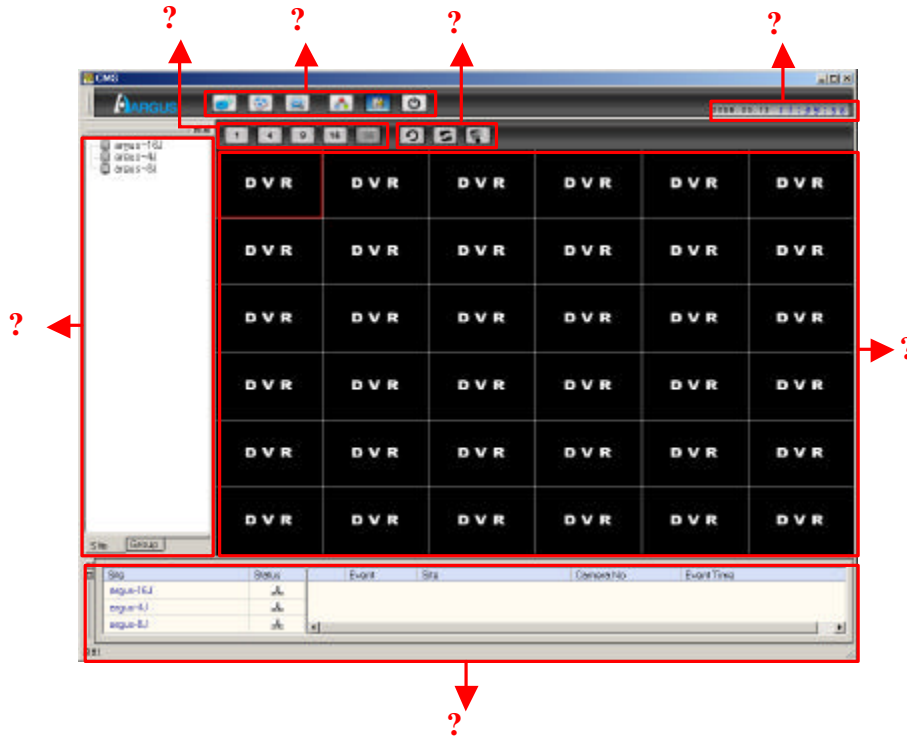
- . When you first run CMS program,
you see this Log-In Window.



- . Type 'admin' for ID & Password.
Then, click 'Log In' for the initial log in.




CHAP. 2 Composition of User Interface

2-1. Live Display Window



. CMS Program Main Icons

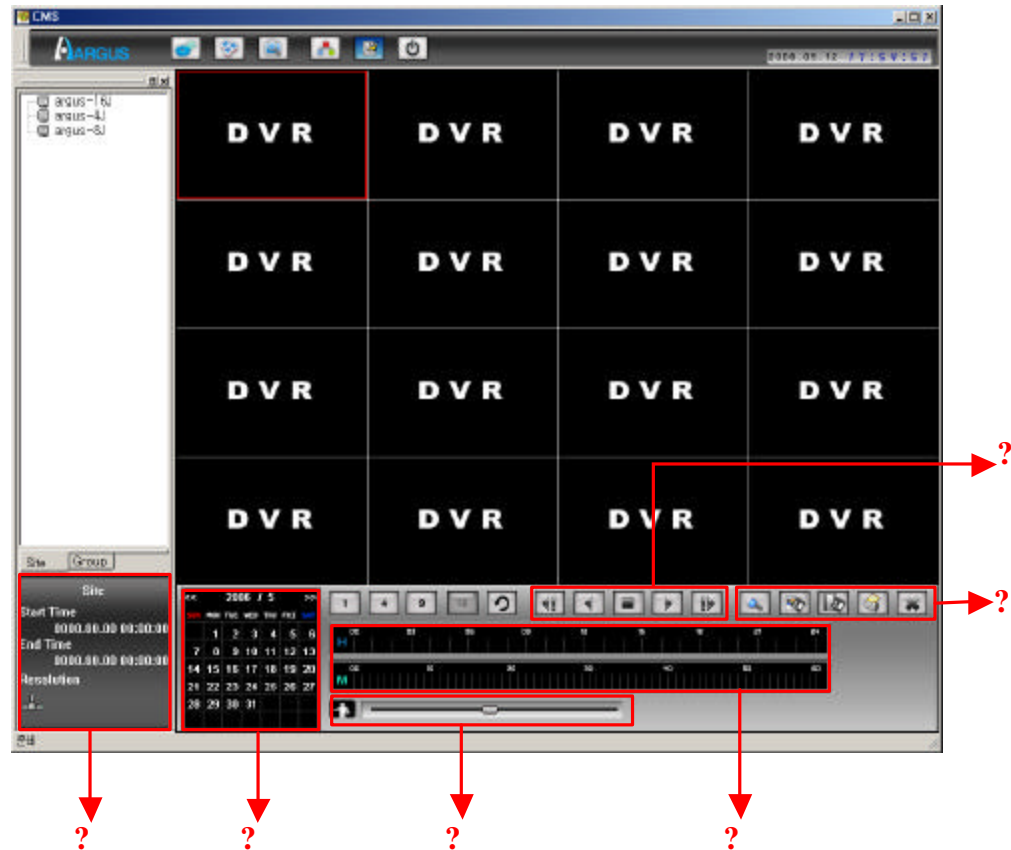


	Setup : shows Setup window		View Tree : Shows Site Tree Window
	Group Setup : Shows Group Setup Window		View Event : Shows Event List Window
	Search : Transfers to Search Mode		Exit : Exit Program

- . Registered Site and Group Information list box
- . Connection Status Display and Event List Display box
- . Split Screen of Image Display
- . Icons for Channel Split Selection (1 , 4 , 9 , 16 , 32)
- . Rotation , Auto Rotation , P/T/Z
- . Current Time Display

CHAP. 2 Composition of User Interface


2-2. PlayBack Display Window

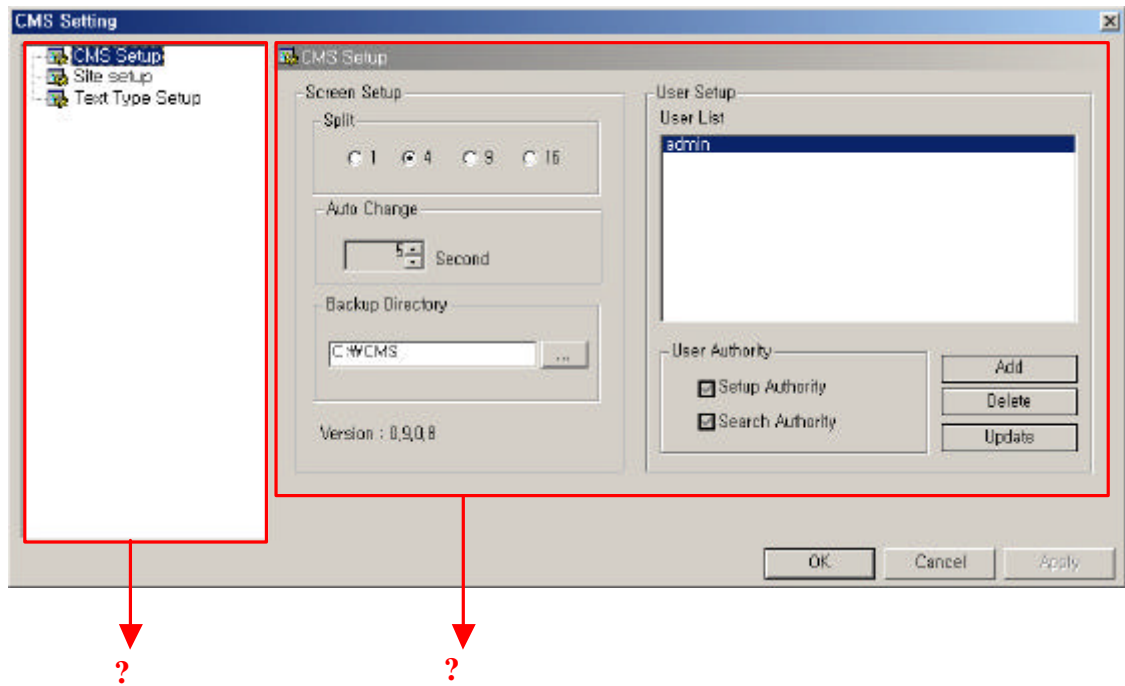


- . Start & End Time Display of Recorded Images from a Connected Site
- . Recorded Date Display
- . Playback Speed Selection Bar
- . Time Selection Bar of Recorded Images
- . Buttons for Search Event , Save Image , Save Avi , Print , Close Search
- . Control Buttons for Image Display

CHAP. 2 Composition of User Interface

2-3. Setup Mode Display Window


– Click  icon, then you see setup window shown below.

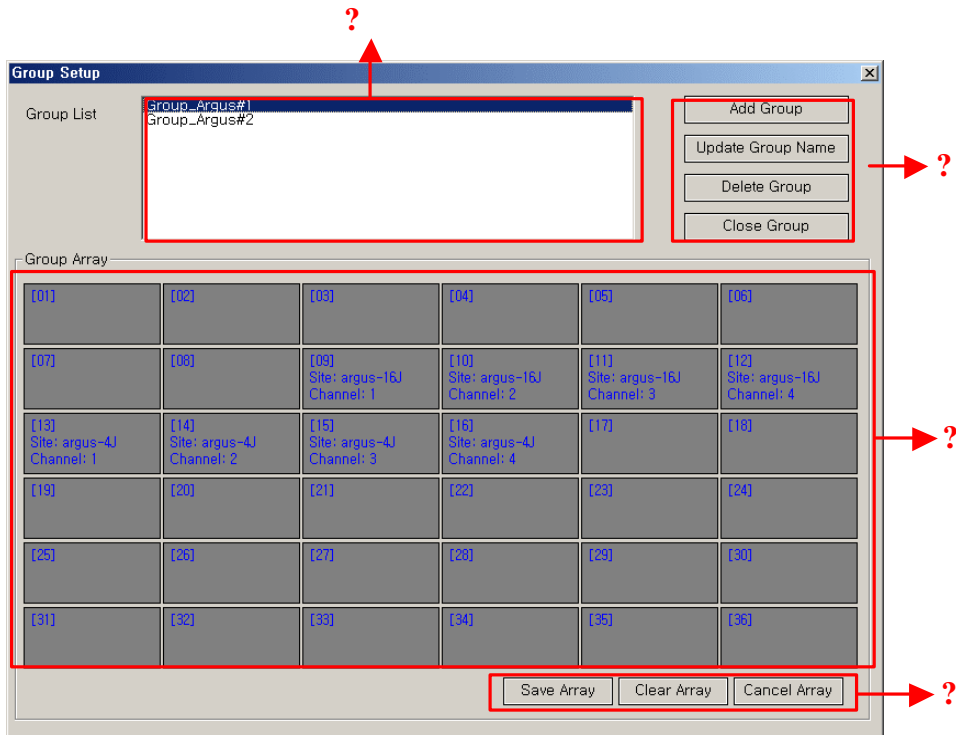


- . Setup List
(CMS Setup, Site Setup, Text Type Setup)
- . Setup Display
(Screen Setup and User Setup)

CHAP. 2 Composition of User Interface

2-4. Group Setup Display Window


– Click  icon, then you see setup window shown below.

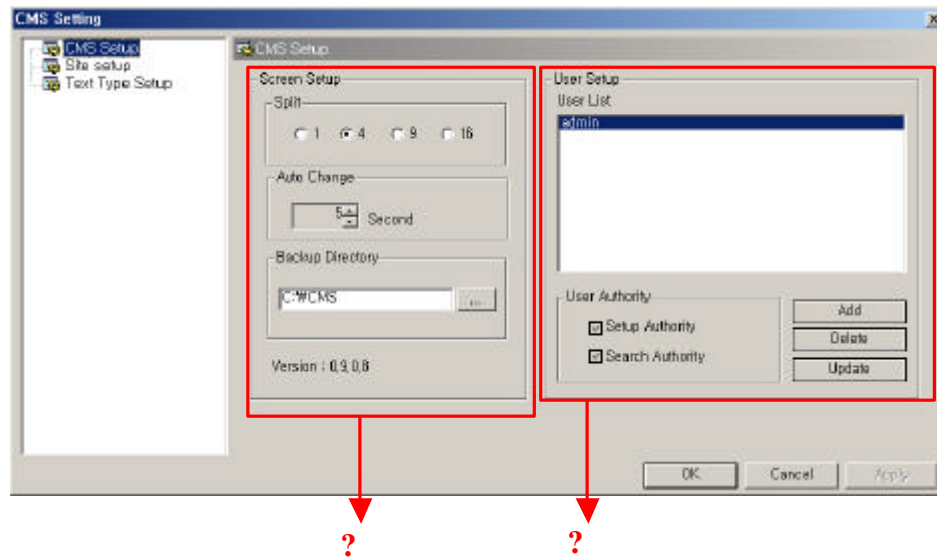


- . Registered group list box
- . Buttons for Group Management
- . Channel Array saved in a group
- . Buttons for Group Array Management

CHAP. 3 Setup

3-1. CMS Setup

- Click  icon, then you see setup window shown below.



- . Screen Setup
 - Split : Initial Split Display Setup
(When you first run the CMS program, you can see this initial split image display as you selected. 1/4/9/16)
 - Auto Change : Duration Setup of Auto Rotation
(Use arrow buttons to adjust duration 5~60 sec)
 - Backup Directory : Selects Backup Directory
(You can choose a backup directory that backup images will be saved.)
 - Version : Version Information of CMS program
- . User Setup
 - User List : CMS User List
 - User Authority : Authority given to an User
 - + Setup Authority : You can grant authority to an user to manage setup.
 - + Search Authority : You can grant authority to an user for search mode.

Click 'Add' button to add a user in this list.

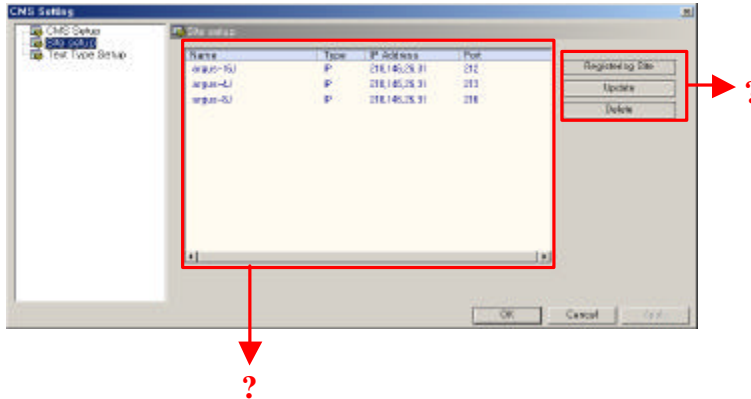
Type a user name as you want in 'User Name' text box.

Put a password that you want and confirm it again.

Choose authority that you want to grant to an user. Then, click 'OK' button.

CHAP. 3 Setup

3-2. Site Setup



. Registered Site List

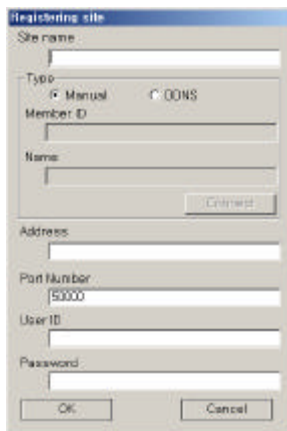
. Registration

Site Registration Window

- Site name : Site Name to be connected

(You can name it as you want. For example, parking lot#1)

- Type : You can input IP address manually or automatically via DDNS.



(Manual)

It connects to the IP Address that you input manually.

-Address : IP Address of a Site to be connected to.

-Port Number : Port Number of a Site to be connected to.

-User ID : User ID already registered in a DVR.

-Password : Password already registered in a DVR.



(DDNS)

It connects to the IP address assigned from DDNS Server.

+ Member ID : Member ID for Connecting to DDNS Server.

+ Name : DVR Name Registered in DDNS Server.

After you input Member ID & Name, click 'Connect' button.

Then, it automatically shows IP address & Port Number.

In the last place, input User ID & Password and click 'OK' button.

. Update

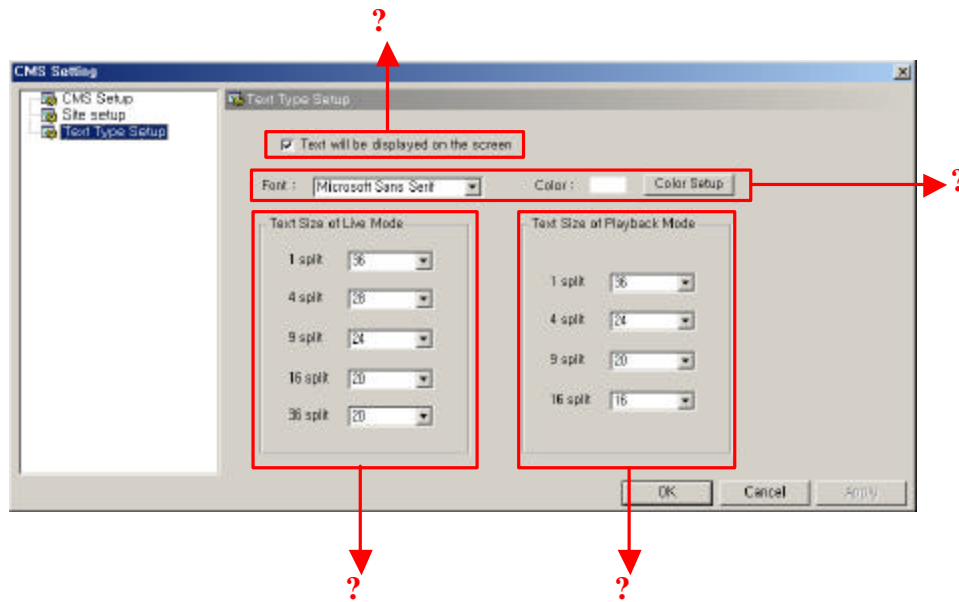
If you want to change the setup of a site which has been already registered, click 'Update' button.

. Delete

If you want to delete a site, choose the site in the site list box and click 'Delete' button.

CHAP. 3 Setup

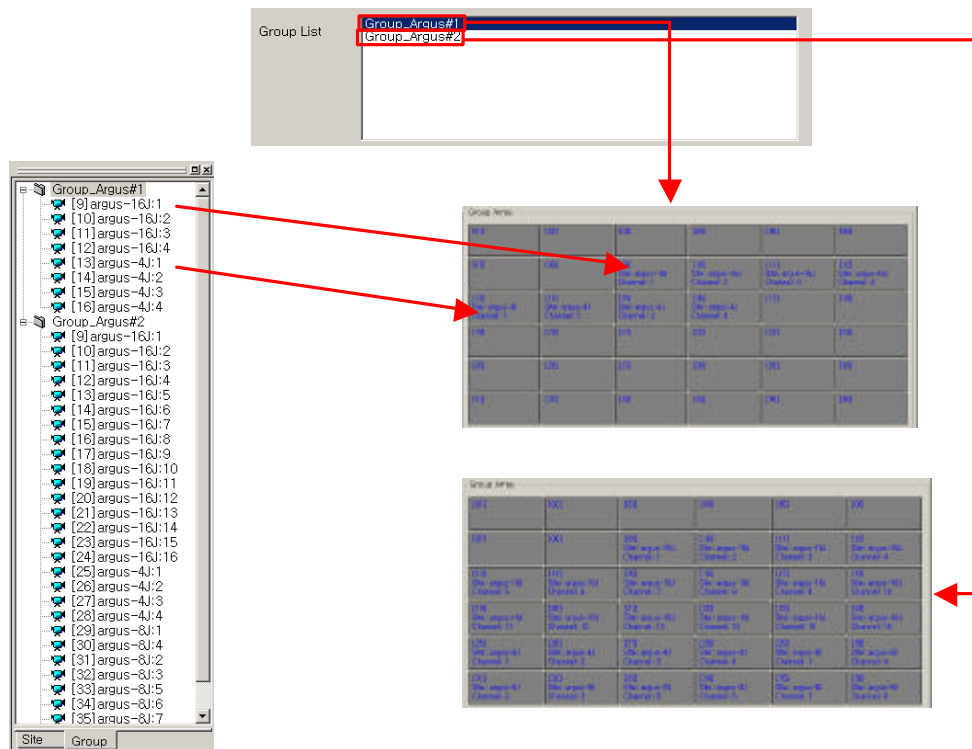
3-3. Text Type Setup



- . Check box for OSD Display on the screen
(If you don't want to see text on the screen, empty this check box.)
- . OSD font & Text Color Setup
- . OSD Size Setup on each Split Mode for Live View
- . OSD Size Setup on each Split Mode for Playback

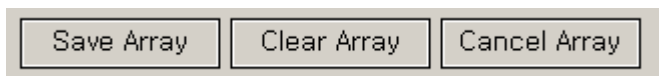
CHAP. 4 Group Setup

4-1. Outline of Group Function



Group Function :

Allows you to monitor various images from different sites on one screen.




Save Array : Saves Channels selected in Group Array

Clear Array : Clear all channels selected in Group Array

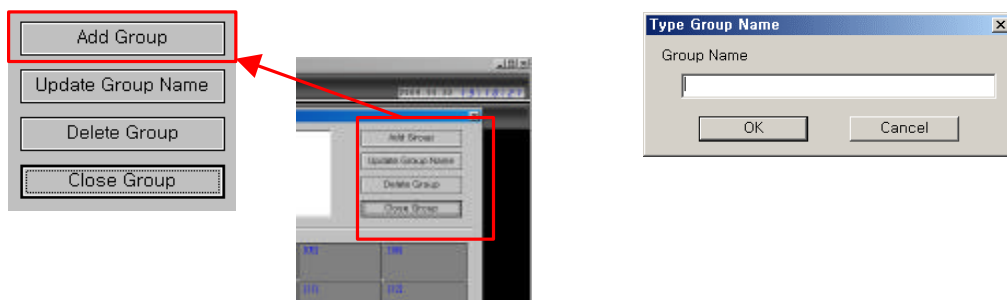
Cancel Array : Cancel the channels added before clicking 'Save Array' button.

CHAP. 4 Group Setup

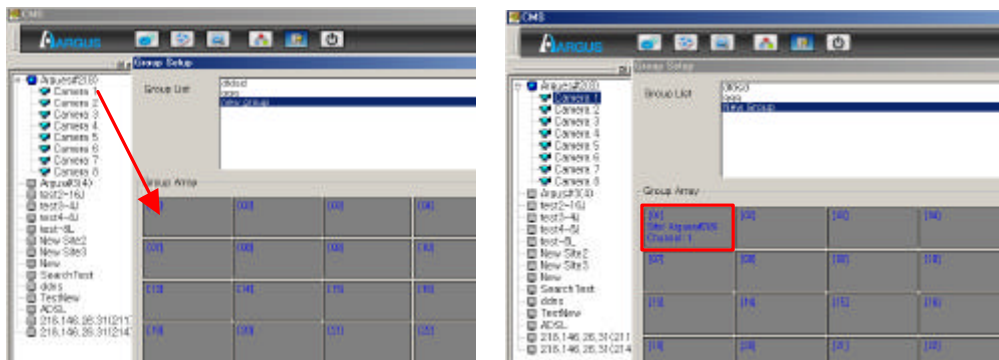
4-2. How to add a Group

- Click  icon to see the group setup window.

- 1) Press 'Add Group' button and input a new name of a group.
Then, click 'OK' Button.



- 2) From the View Tree (site tab) shown below, pick cameras of a connected site and drag & drop onto a group array.

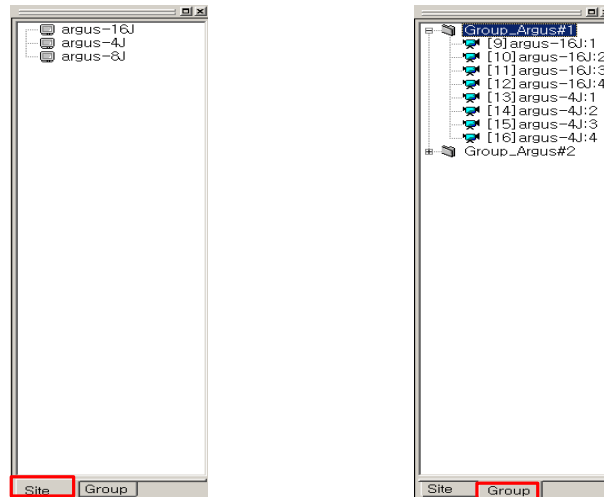


< Before >

< After >

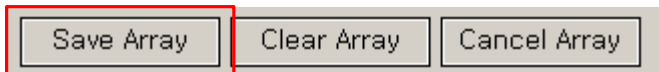
CHAP. 4 Group Setup

- Site & Group View Tree Window showing Registered Sites & Group Information



< View Tree Window >

3) Save the added Array by pressing 'Save Array' button.



4) To exit, click 'Close Group' button. Then, we see the group list as shown in <View Tree Window> above.



CHAP. 5 Live

5-1. Outline of Live Mode

. Event List Window showing Registered Sites & Connection Status

Site	Status	Event	Site	Camera No	Event Time
argus-16J					
argus-4J					
argus-8J					

. Split Display Screen showing Images



. Buttons for selection of split mode (1/ 4/ 9/ 16/ 36)



CHAP. 5 Live

. : Rotation , Auto Rotation , P/T/Z



Rotation : Click this button to see the next image

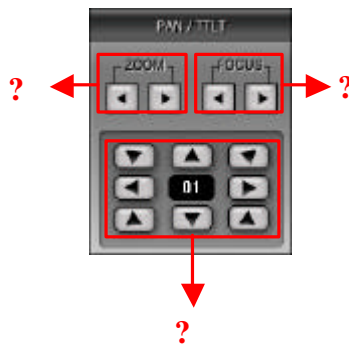


Auto Rotation : It shows the next image automatically.



P/T/Z : P/T/Z camera control button

(When you press this button, you will see the window shown below. If you press this button one more time, this window will disappear.)



- . : Zoom In/Out Arrow Buttons
- . : Focus Adjustment Buttons
- . : Pan/ Tilt Control Buttons

. : Current Time Display Window



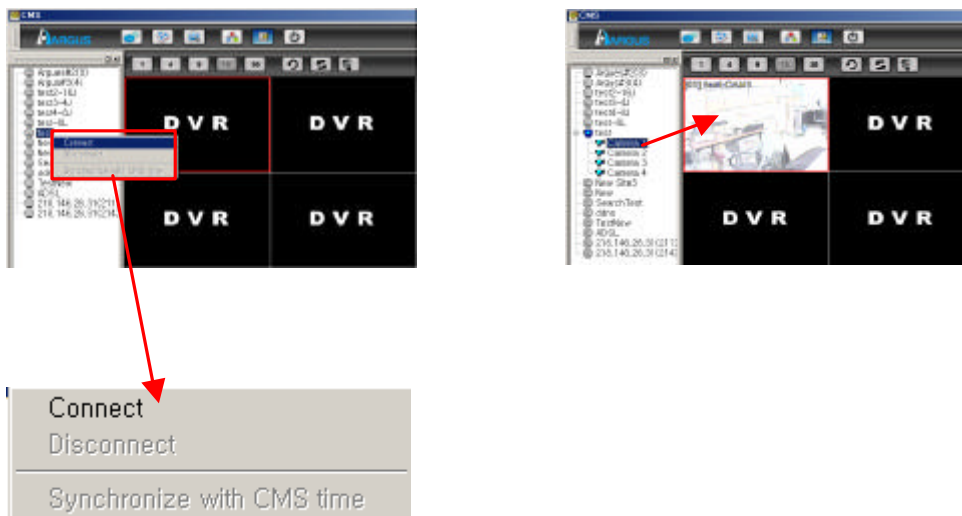
CHAP. 5 Live

5-2. How to Connect

- How to drag a Site onto on the screen



- After 'Right-Click' and select 'Connect' on each site, drag cameras onto the screen.



- * Pop-up Menu of Site Tree Window
 - Connect : Connects to the Site that you select
 - Disconnect : Disconnects from the Site that you selected
 - Synchronize with CMS time : Synchronizes CMS program time with DVR time

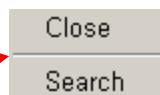
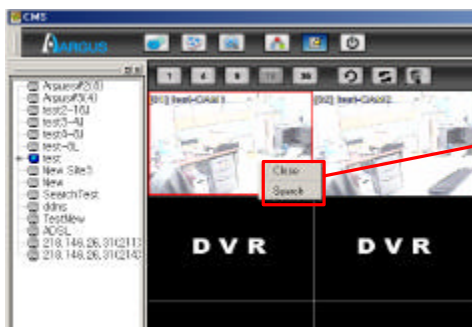
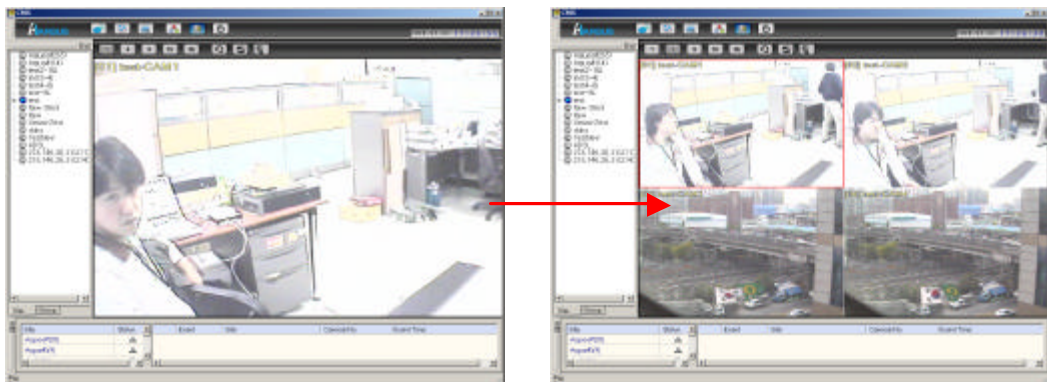
CHAP. 5 Live

5-3. How to disconnect

- After 'Right-Click' on the site that you want to disconnect and choose 'Disconnect' for disconnection.

5-4. How to switch from Multi-Split Mode to Full Screen Mode

- Double-Click the image on split screen that you want to see in a full screen.
- Double-Click again, then you can go back to Multi-Split Mode.



* Right-Click on a image then you will see this popup menu.

Close : Clbse a chosen image
 Search : Go to Playback Mode

CHAP. 6 PlayBack

6-1. Outline of PlayBack

. Playback Mode Display

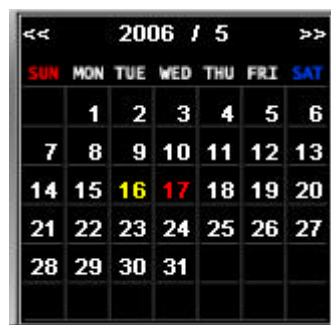
: Shows Recording start time, end time, size of image and connection status.



. Calendar Display

: Shows recorded dates.

The yellow color indicates recorded dates and the red color indicates the end date.



. Playback Speed Bar

: Adjusts playback speed.

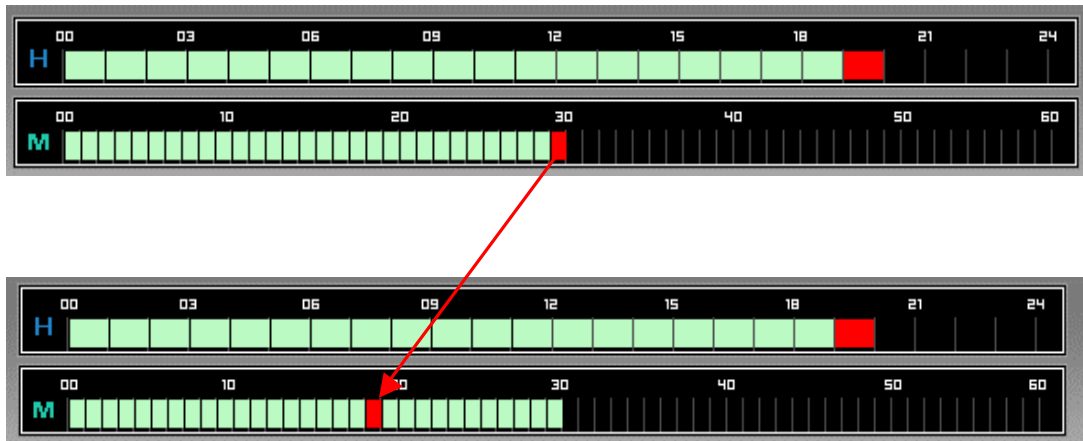
(Unable to use while playback is running)



CHAP. 5 PlayBack

. Time Selection Bar

: Shows Time (Hours and Minutes) of Recorded images so that you can select the recorded images of a certain time that you want to see.



< With one click, you can move a red box to other location that you want to choose.>

. Control Buttons for Image Display



Previous Image : Shows the previous image (one by one)



Play backward : Plays backward



Stop : Stops playing



Play : Plays images



Next Image : Shows the next image (one by one)

CHAP. 5 PlayBack

- . Icons for special functions
(Search Event , Save Image , Save Avi , Print , Close Search)



Search Event : Shows Event List



Save Image : Saves an Image in JPG file



Save Avi : Saves in AVI file (Only available on a full screen mode)

Stop playing and click this button, then you see 'Saving AVI Bar' one the screen.
Click this button again, then it stops making AVI file.



Print : Prints a image using a printer



Close Search : Closes Playback Mode and goes back to Live Mode